

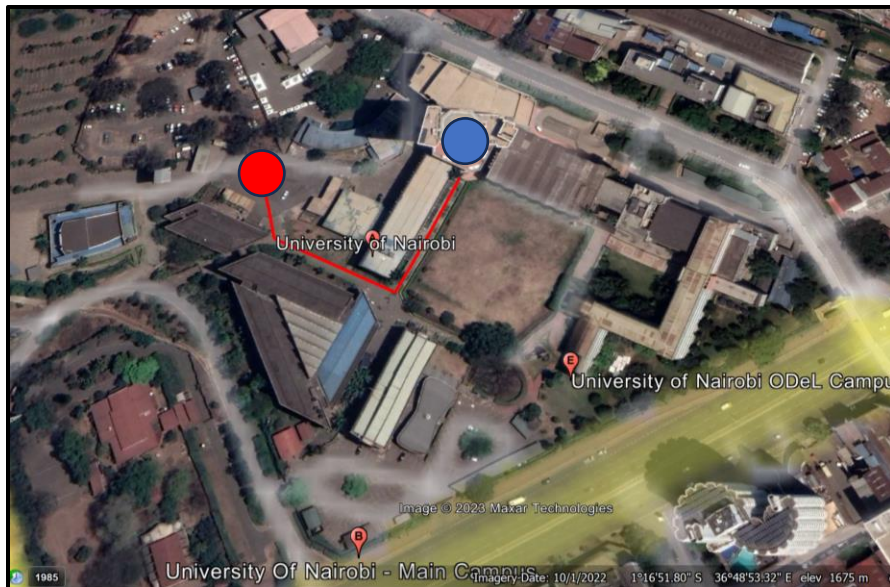
Excursion Guide for Route 3 to the larger Mt Kenya region (25 – 27.06.2023)



Welcome to the exciting excursion guide to the Mt. Kenya region! Get ready for a thrilling journey that explores the impact of colonial legacies on land use and resource management.

Day 1: Sunday 25.06

0815 hrs: Departure from 8-4-4 Lecture Hall Block, University grounds, Nairobi

Board the comfortable transportation and kick off your adventure to the Mt. Kenya region. As you leave the bustling city behind, prepare yourself for a day of insightful exploration.



How to locate the departure point: Walk from the conference venue  and follow the red line to the  where the cars will be parked.

0900 hrs: Stop at the Thika Delmonte Farm

This is our first major stop where we will look back to history and appreciate the process of land use transformation over the years. Of importance is looking at how these transformation processes have impacted on the commons and people depending on them.



1100 hrs: 30 minutes Coffee break at Sagana *(please have enough local currency for coffee/tea and accompaniments)*

Take a well-deserved coffee break in Sagana, a picturesque location. Enjoy a hot cup of coffee while engaging in lively conversations about the historical context of land ownership and its implications for sustainable commons. Exchange ideas and viewpoints with fellow participants, adding depth to your understanding.

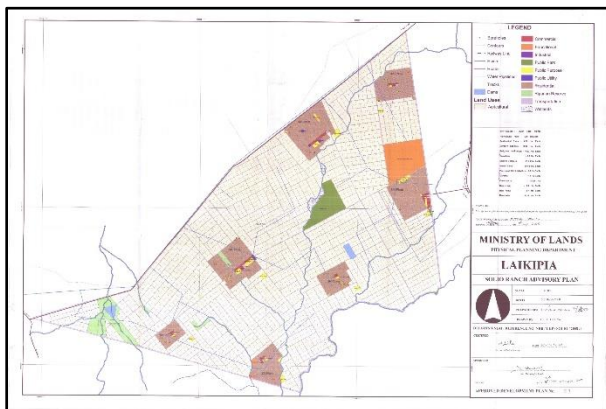


1300 hrs: Arrival at the Aberdare Country Club

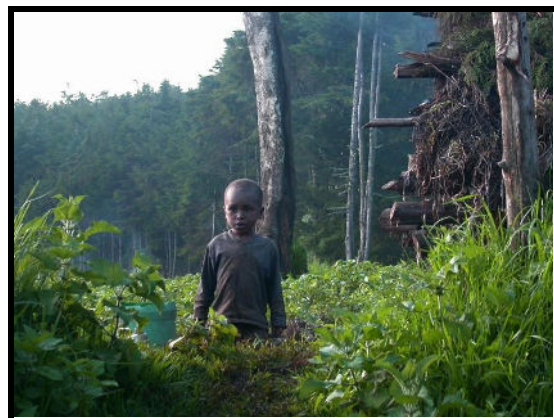
We are booked for a night stay at the Aberdare Country Club. We will have one hour forty-five minutes to check in and have lunch. At **1445 hrs** we will depart for an afternoon tour to forest line of Mt Kenya through the Solio Settlements, again appreciating how land use transformation and forest management practices have impacted on the commons, and in particular ecosystem connectivity in the region.



Right at the entrance of the Aberdare Country Club



The 7 clusters of *Solio settlement scheme*



The shamba system for plantation forest management

Day 2: Monday 26.06

0900 hrs: Departure from the Aberdare Country Club

0950 hrs: Crossing the Equator in Nanyuki,

A 20-minute photo stop at the equator crossing point! Nanyuki, nestled at the equator, serves as a symbolic gateway between the northern and southern hemispheres, reflecting the global nature of the IASC conference.

1030 hrs: Timau Horticultural activities and impacts on water resources in the region

This is our first major stop in the Timau farms, about 25 kilometers after Nanyuki. Timau region is not only an important food basket prominent in medium to large scale wheat production, but it is also a fascinating landscape giving life testament to the enduring influence of colonial legacies on land management. These colonial legacies continue to shape the present-day land tenure, use and management in the region. Our main focus here will be enhancing socioecological sustainability in a rapidly changing landscape.



Horticultural activities in Timau region

1115 hrs: Coffee break at the Entrecote, Kisima



1245 hrs: Ngare Mara Centre

This will be our second major stop, at the Ngare Mara shopping centre, some 15 km past Isiolo town along the great north road linking Kenya and Ethiopia to the north. While Isiolo is the gateway to the north, Ngare Mara can be said to be the area of multiple community convergence. Here you will find a perfect face of most pastoralist communities in the region – Maasai, Turkana, Borana, and the Somali. Understandably, therefore, this is a region of a very rich cultural heritage, diverse ecosystems, and a long history of land management practices that continue to be shaped by both indigenous and modern knowledge systems. At this stop we will discuss about the emerging model of conservation in the name of community conservancies, and the new threats to the rangelands notably the invasive species like the prosopis juliflora and opuntia.

1330 hrs: Arrival at the Sarova Shaba Game Lodge.

Sarova Shaba, nestled in the picturesque landscapes of Shaba National Reserve, offers a truly captivating experience that combines the natural wonders of the Ewaso Nyiro River with the hospitality of a luxurious game lodge. Within the grounds of Sarova Shaba, a hidden gem awaits – the natural springs that bubble forth, offering a serene oasis amidst the rugged terrain. These springs symbolize the essence of the XIX Biennial IASC Conference theme, "The Commons We Want....."

We will check in and have lunch as we relax for the afternoon into the night.....

...you may want to take a dip in the pool or

..... enjoy the ticklish feeling as the fish work on your foot or

..... even enjoy a refreshing drink at the bar or

..... just stargaze and appreciate the clear night sky as you view
the crocodiles by the river side.

1930 hrs:- Evening relaxation with dinner at the Lodge

Day 3: Tuesday 26.06

0630 hrs - Wake up early for a game drive to the Buffalo Springs.

The allure of Buffalo Springs lies not only in its captivating landscapes and wildlife encounters but also in its ability to evoke a sense of awe and appreciation for the delicate balance of nature. It serves as a reminder of the interconnectedness between humans and the natural world, emphasizing the importance of sustainable practices and conservation efforts to ensure the preservation of such extraordinary places for generations to come.

..... Explore the neighbouring Buffalo Springs National Reserve

.....Look out for elephants, lions, Grant's eagles, reticulated giraffe,
and Gravy's zebra among many more

.....Enjoy the sunrise and the peaceful atmosphere of the reserve

0930 hrs: Return to the lodge for breakfast

**1030 hrs: Relax as you continue to enjoy the facilities at Sarova
Shaba**

1100 hrs: Check out

1130 hrs: Departure Sarova Shaba

1330 hrs: Brief lunch break in Nanyuki

1930 hrs: Expected time of arrival in Nairobi